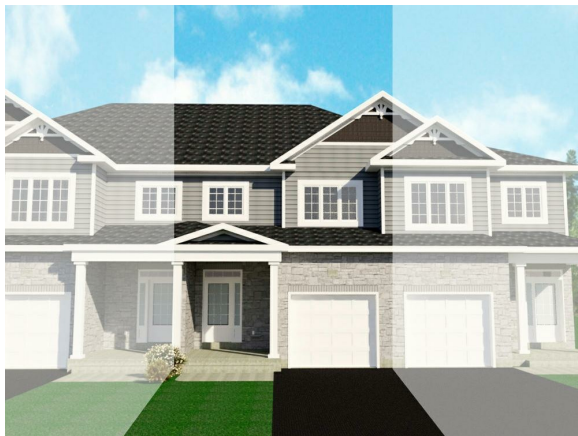


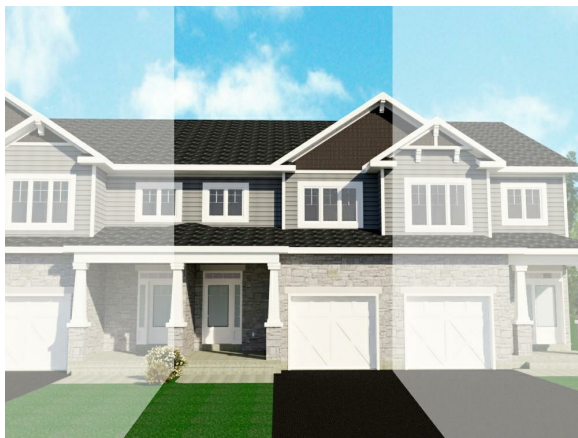
# THE AMHERST

1,715 SQFT

2 STOREY  
3 BEDROOMS / 2.5 BATHS

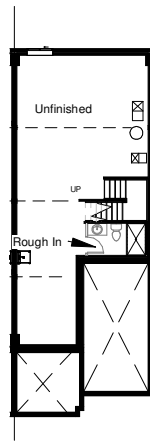


Elevation A

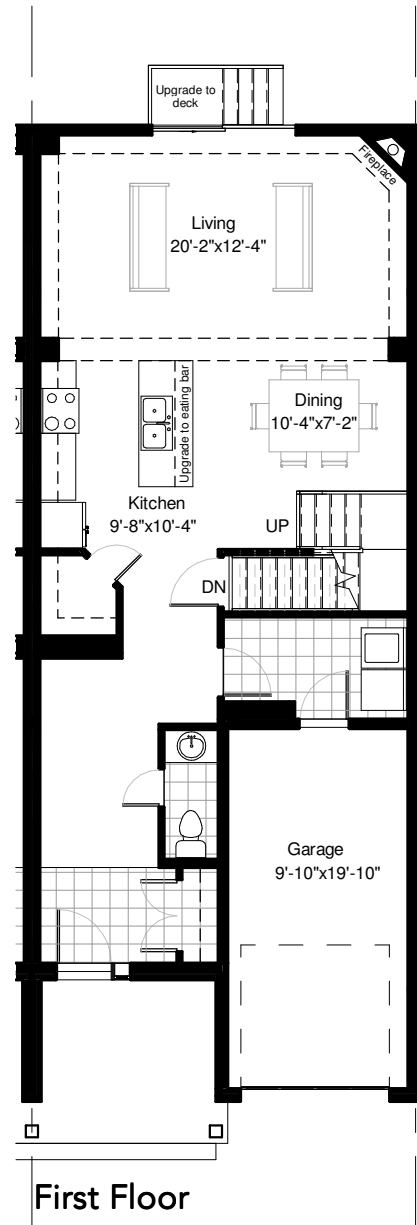


Elevation B

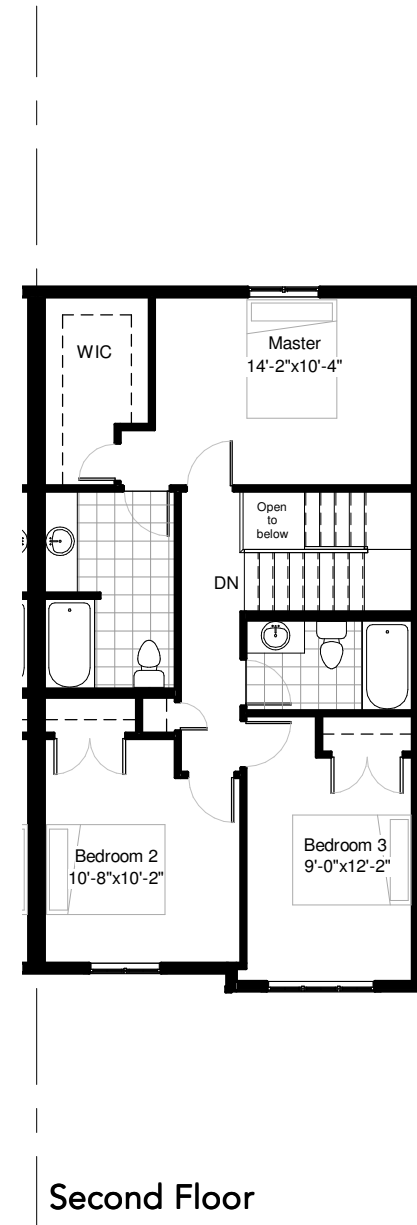
[www.caraco.ca](http://www.caraco.ca)



Basement  
1/2 SCALE



First Floor



Second Floor

The Amherst offers 1,715 sqft, three bedrooms and two and a half bathrooms. The main floors boast ceramic tile in entry, laminate flooring, walk in pantry, open concept, mudroom/laundry, and powder room. Upstairs there are three bedrooms including spacious master with walk-in closet and 4-piece ensuite with option for 5ft shower in lieu of tub.

Available in:



**All CaraCo homes include:**

- 9' ceilings to the main floor
- Granite kitchen countertops
- Stainless undermount kitchen sink
- 39" tall upper kitchen cabinets
- Gas fireplace
- 7 pot lights (3 in the kitchen and 4 in the living room)
- 2 pendants over the kitchen island
- Eavestroughs
- Drywalled garage
- Basement rough-in
- Paved driveway
- Limited lifetime warranty of shingles
- Limited lifetime warranty of foundation waterproofing
- 7 year Tarion warranty
- EnergySTAR windows

**Our Town Series homes include:**

- Ceramic tile in entry
- Laminate Level I in main floor living areas

April 16, 2019



"Upgrade to" refers to an available optional upgrade that must be purchased separately to be included.

Renderings, plans, specifications and stated dimensions are subject to change without notice at the discretion of the Vendor, E & OE. Actual usable floor space may vary from the stated floor area.