

THE NIGHTINGALE

1,550 SQFT

BUNGALOW
2 BEDROOM / 2 BATHS

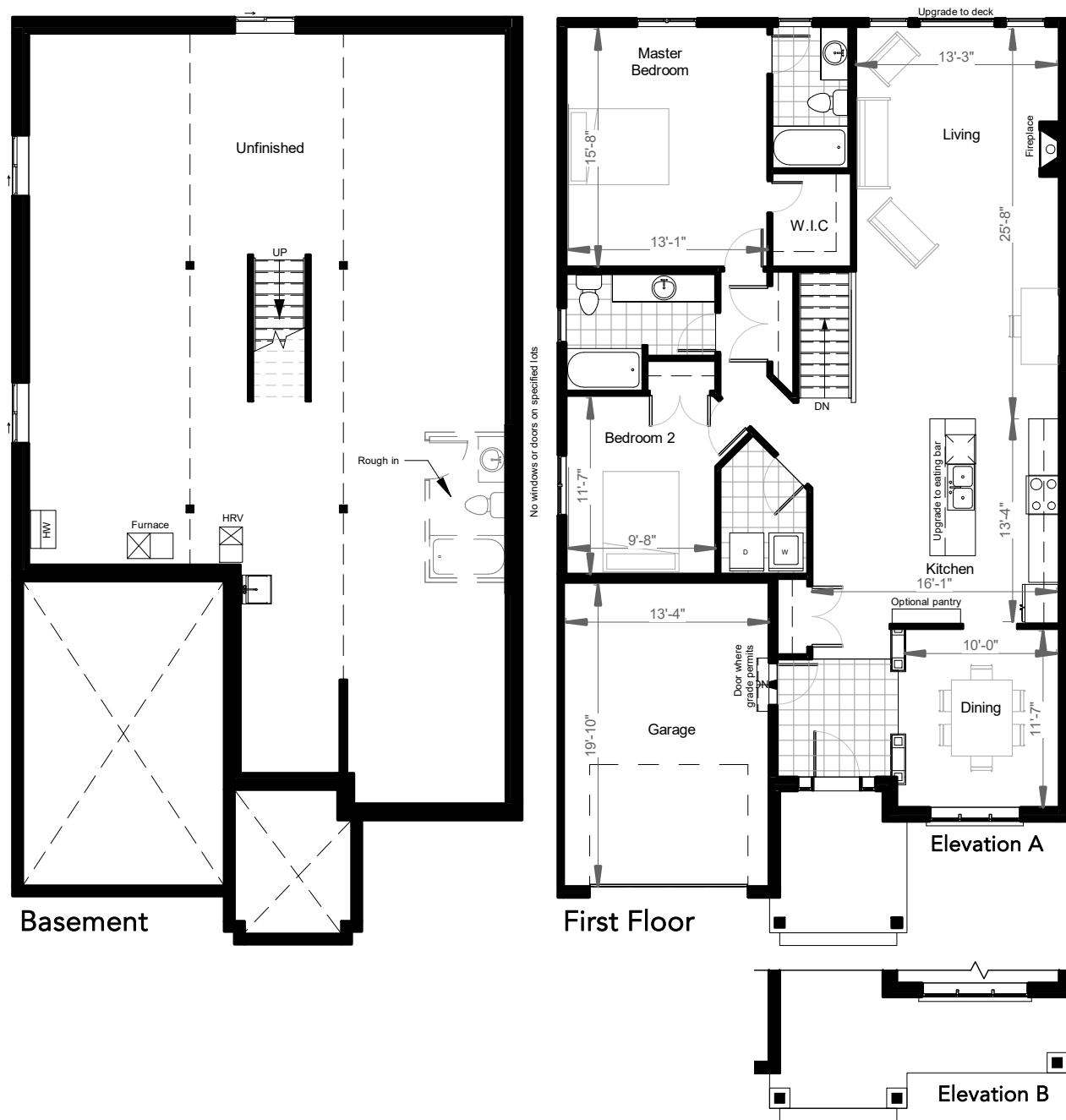


Elevation A*



Elevation B*

www.caraco.ca



*Selection indicates elevation selection and any applicable plan selections.

"Upgrade to" refers to an available optional upgrade that must be purchased separately to be included. Renderings, plans, specifications and stated dimensions are subject to change without notice at the discretion of the Vendor, E & OE. Actual usable floor space may vary from the stated floor area.

Available in:



All CaraCo homes include:

- 9' ceilings to the main floor
- Granite kitchen countertops
- Stainless undermount kitchen sink
- Tall upper kitchen cabinets
- Gas fireplace
- 7 pot lights (3 in the kitchen and 4 in the living room)
- 2 pendants over the kitchen island
- Eavestroughs
- Drywalled garage
- Basement rough-in
- Paved driveway
- Limited lifetime warranty of shingles
- Limited lifetime warranty of foundation waterproofing
- 7 year Tarion warranty
- EnergySTAR windows

Our Summit Series homes include:

- Ceramic tile in entry / laundry / bathrooms
- Hardwood Level I in main floor living areas

October 30, 2019

Come Home to
CARACO