




# THE BRIDGEVIEW

3,080 SQ.FT | 2 STOREY

|   |  |   |
|---|--|---|
| BED  | BATH  | CAR  |
| <b>4</b>  | <b>3.5</b>   | <b>2</b>  |



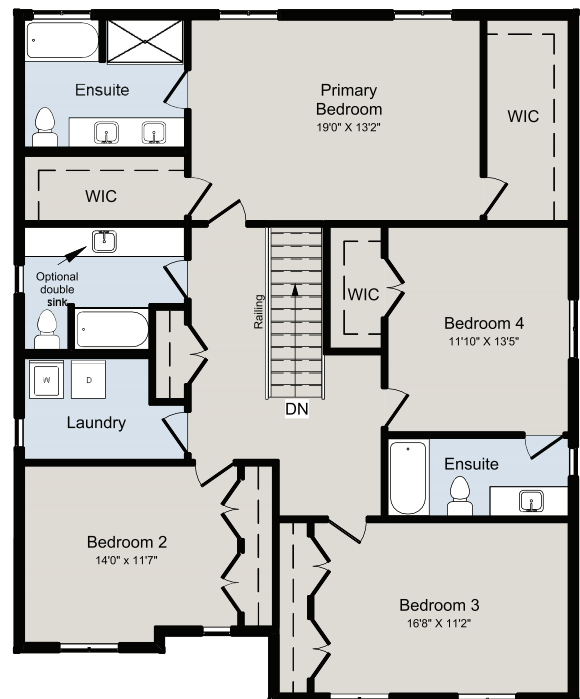
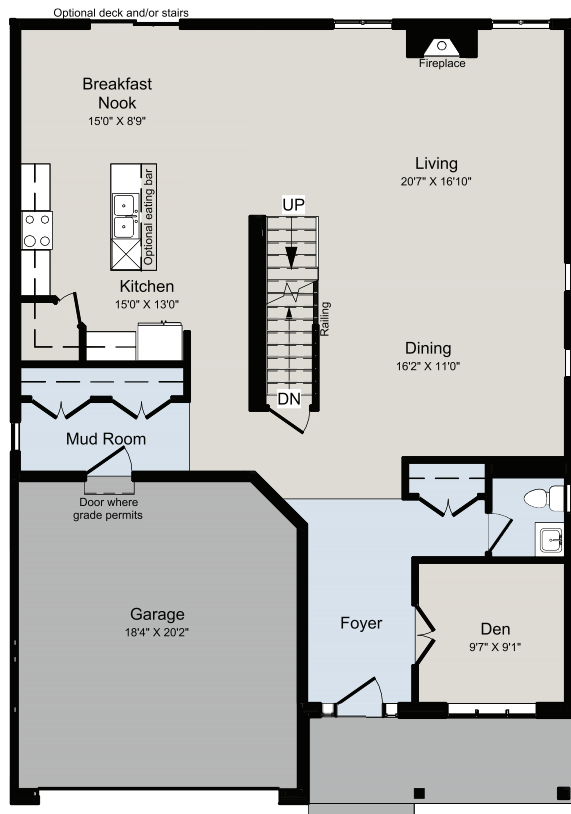
ELEVATION A



ELEVATION B

MAIN FLOOR

SECOND FLOOR



### ALL CARACO HOMES INCLUDE:

- 9' main floor wall height
- Quartz countertops in kitchen and bathrooms (Level I)
- Stainless undermount kitchen sink
- Extended upper kitchen cabinets
- 7 pot lights (3 in the kitchen and 4 in the living room)
- 2 pendants over the kitchen island
- Basement bathroom rough-in
- Drywalled garage
- Exterior eavestroughs
- Asphalt paved driveway
- Limited lifetime warranty of shingles
- Limited lifetime warranty of foundation waterproofing
- EnergySTAR® windows
- 7 year Tarion warranty

### PRESTIGE SERIES HOMES INCLUDE:

- Ceramic tile (Level I) in foyer, laundry and bathrooms
- Hardwood flooring (Level I) in main floor living areas
- Natural gas fireplace
- 200 amp electrical panel