

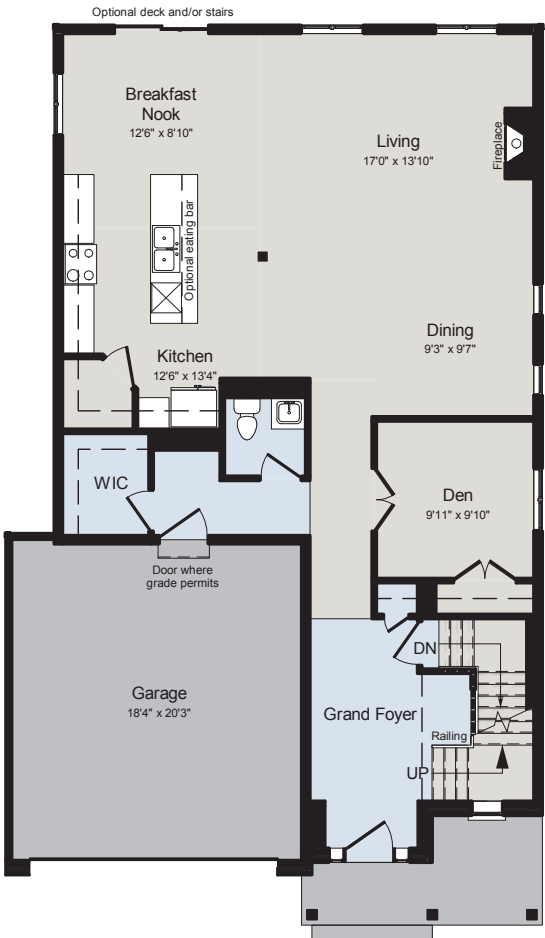
# THE BARCLAY

3,000 SQ.FT | 2 STOREY

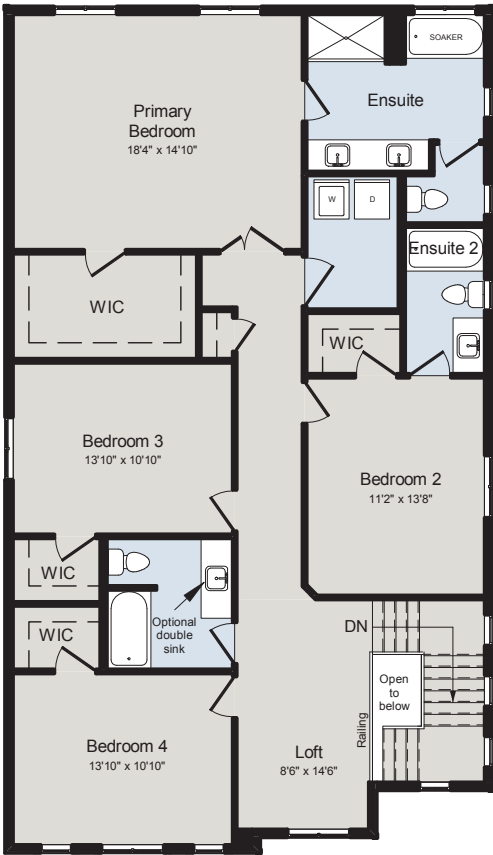
BED 	BATH 	CAR 
<b>4</b>	<b>3.5</b>	<b>2</b>



## MAIN FLOOR



## SECOND FLOOR



### ALL CARACO HOMES INCLUDE:

- 9' main floor ceilings (nominal size)\*
- Solid surface countertops in kitchen
- Stainless undermount kitchen sink
- Extended upper kitchen cabinets
- Natural gas fireplace
- 7 pot lights (3 in the kitchen and 4 in the living room)
- 2 pendants over the kitchen island
- Basement bathroom rough-in
- Drywalled garage
- Exterior eavestroughs
- Asphalt paved driveway
- Limited lifetime warranty of shingles
- Limited lifetime warranty of foundation waterproofing
- EnergySTAR® windows
- 7 year Tarion warranty

### SUMMIT SERIES HOMES INCLUDE:

- Ceramic tile (Level I) in foyer, laundry and all bathrooms
- Hardwood (Level I) in main floor living areas
- Upgraded fireplace
- Main or Second floor laundry room
- Double sink vanities in primary ensuite
- 200 amp electrical panel
- Wide double garage