

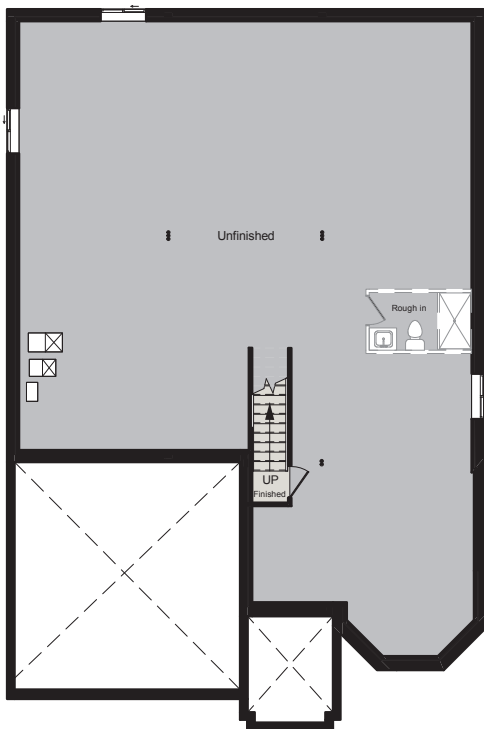
THE GRENADIER

2,000 SQ.FT | BUNGALOW

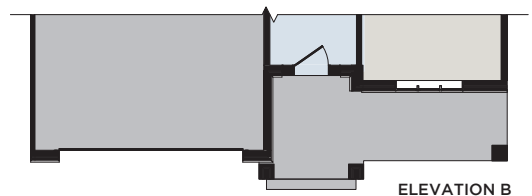
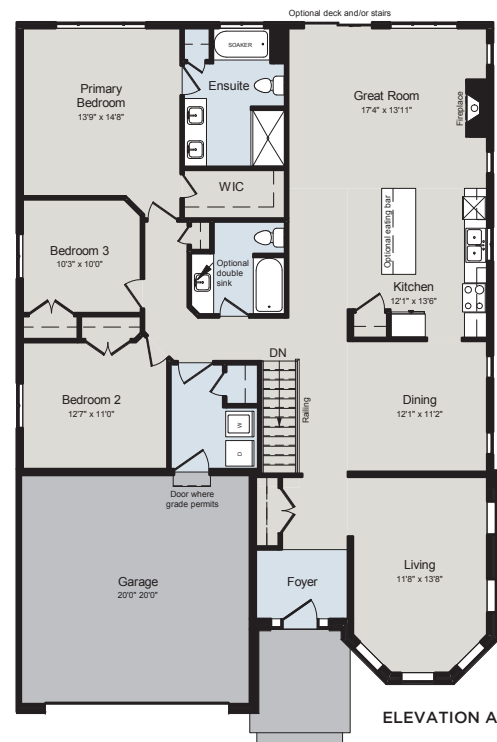
BED 	BATH 	CAR 
3	2	2



BASEMENT



MAIN FLOOR



ALL CARACO HOMES INCLUDE:

- 9' ceilings to the main floor
- Solid surface countertops in kitchen
- Stainless undermount kitchen sink
- Extended upper kitchen cabinets
- Natural gas fireplace
- 7 pot lights (3 in the kitchen and 4 in the living room)
- 2 pendants over the kitchen island
- Basement bathroom rough-in
- Drywalled garage
- Exterior eavestroughs
- Asphalt paved driveway
- Limited lifetime warranty of shingles
- Limited lifetime warranty of foundation waterproofing
- EnergySTAR® windows
- 7 year Tarion warranty

LIMITED SERIES HOMES INCLUDE:

- Ceramic tile (Level I) in foyer, laundry and all bathrooms
- Hardwood (Level I) in main floor living areas
- Upgraded fireplace
- Main or Second floor laundry room
- Stone and brick exterior facade
- 200 amp electrical service
- Wide double garage