




# THE INGLEWOOD

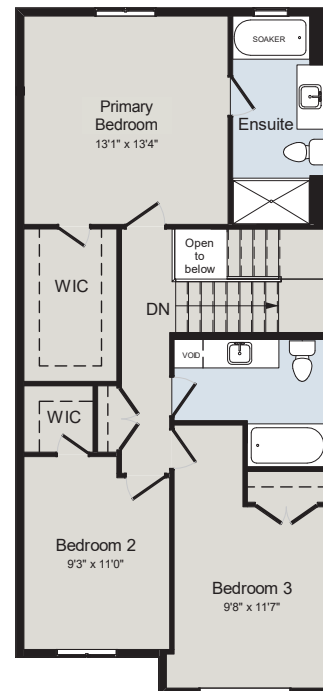
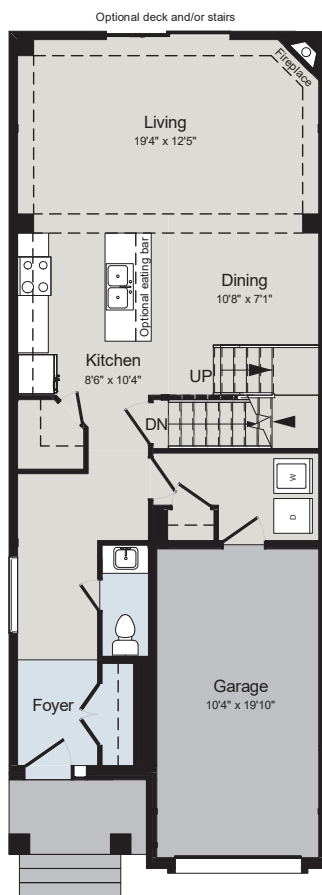
1,750 SQ.FT | TOWNHOME

BED 	BATH 	CAR 
<b>3</b>	<b>2.5</b>	<b>1</b>



MAIN FLOOR

SECOND FLOOR



**ALL CARACO HOMES INCLUDE:**

- 9' ceilings to the main floor
- Granite countertops in kitchen
- Stainless undermount kitchen sink
- Extended upper kitchen cabinets
- Natural gas fireplace
- 7 pot lights (3 in the kitchen and 4 in the living room)
- 2 pendants over the kitchen island
- Basement bathroom rough-in
- Drywalled garage
- Exterior eavestroughs
- Asphalt paved driveway
- Limited lifetime warranty of shingles
- Limited lifetime warranty of foundation waterproofing
- EnergySTAR® windows
- 7 year Tarion warranty

**URBAN SERIES HOMES INCLUDE:**

- Ceramic tile (Level I) in foyer
- Laminate plank flooring (Level I) in main floor living areas
- Corner walk-in pantry in kitchen
- Main floor laundry room