


# THE INGLEWOOD

1,750 SQ.FT | TOWNHOME

BED 	BATH 	CAR 
<b>3</b>	<b>2.5</b>	<b>1</b>

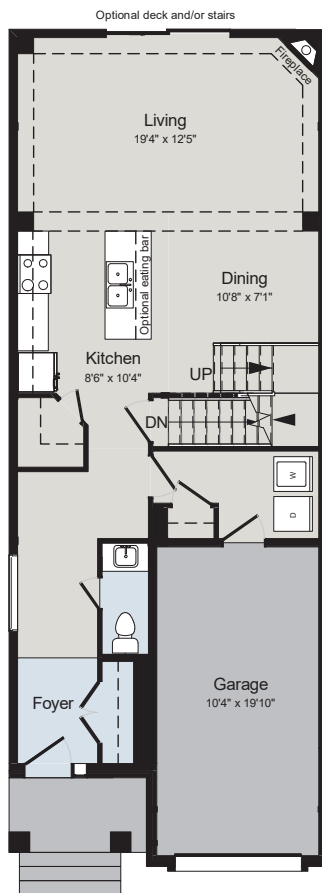


**ELEVATION A\***

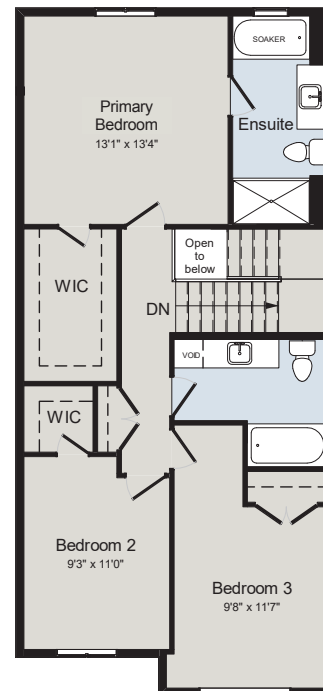


**ELEVATION B\***

## MAIN FLOOR



## SECOND FLOOR



### ALL CARACO HOMES INCLUDE:

- 9' ceilings to the main floor
- Granite countertops in kitchen
- Stainless undermount kitchen sink
- Extended upper kitchen cabinets
- Natural gas fireplace
- 7 pot lights (3 in the kitchen and 4 in the living room)
- 2 pendants over the kitchen island
- Basement bathroom rough-in
- Drywalled garage
- Exterior eavestroughs
- Asphalt paved driveway
- Limited lifetime warranty of shingles
- Limited lifetime warranty of foundation waterproofing
- EnergySTAR® windows
- 7 year Tarion warranty

### URBAN SERIES HOMES INCLUDE:

- Ceramic tile (Level I) in foyer
- Laminate flooring (Level I) in main floor living areas
- Walk-in corner pantry in kitchen
- Main floor laundry room