



# THE PARKRIDGE

2,540 SQ.FT | 2 STOREY | CROWN SERIES

BED 	BATH 	CAR 
<b>4</b>	<b>2.5</b>	<b>2</b>



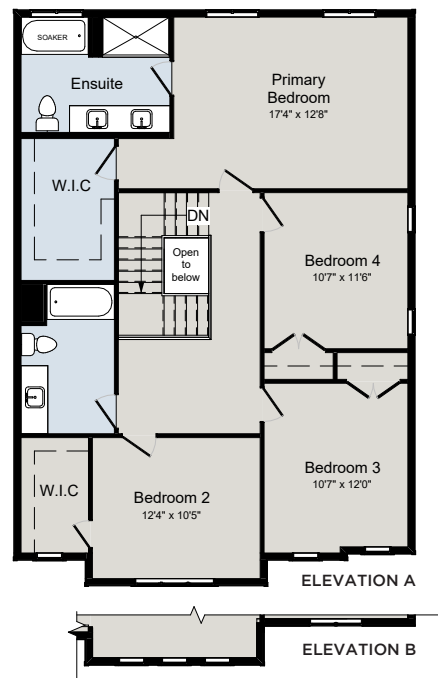
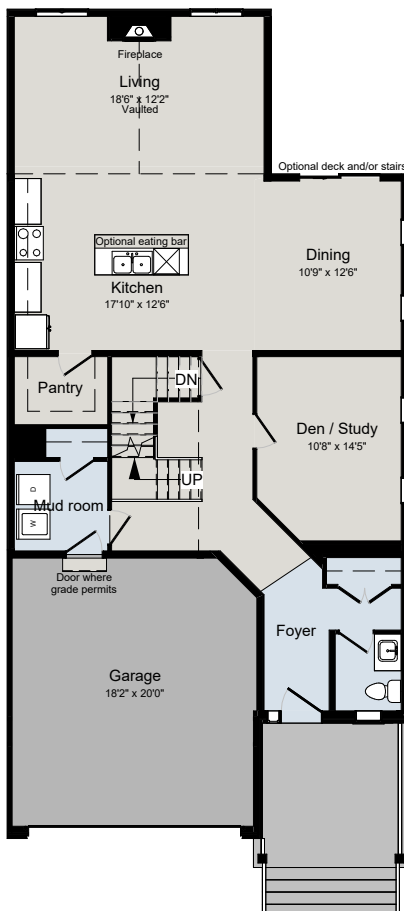
**ELEVATION A**



**ELEVATION B**

**MAIN FLOOR**

**SECOND FLOOR**



**ALL CARACO HOMES INCLUDE:**

- 9' main floor wall height
- Quartz countertops in kitchen and bathrooms (Level I)
- Stainless undermount kitchen sink
- Extended upper kitchen cabinets
- 7 pot lights (3 in the kitchen and 4 in the living room)
- 2 pendants over the kitchen island
- Basement bathroom rough-in
- Drywalled garage
- Exterior eavestroughs
- Asphalt paved driveway
- Limited lifetime warranty of shingles
- Limited lifetime warranty of foundation waterproofing
- EnergySTAR® windows
- 7 year Tarion warranty

**CROWN SERIES HOMES INCLUDE:**

- Ceramic tile (Level I) in foyer, laundry and bathrooms
- Hardwood flooring (Level I) in main floor living areas
- Natural gas fireplace
- 200 amp electrical panel