

THE BROOKFIELD

2,780 SQ.FT.

2 STOREY | **PRESTIGE SERIES**

4  | **3.5**  | **2** 

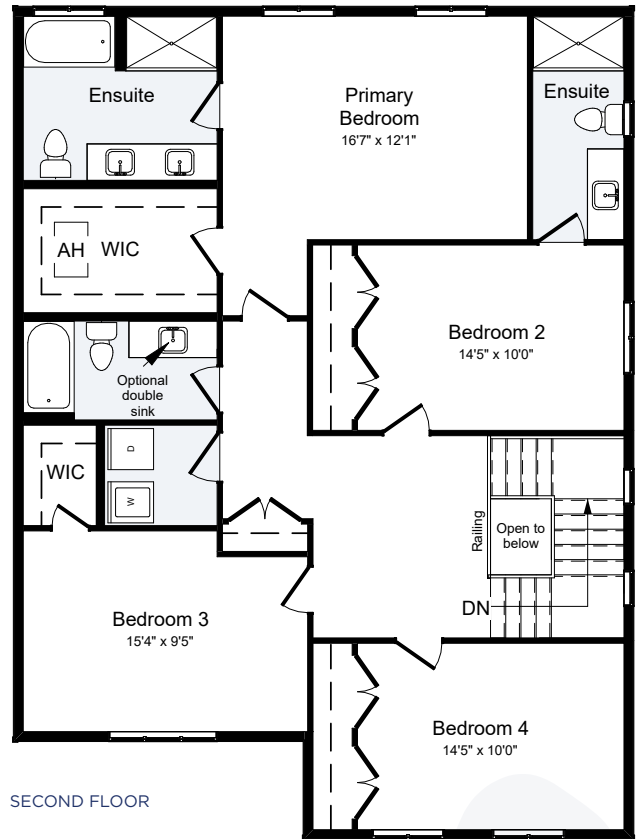
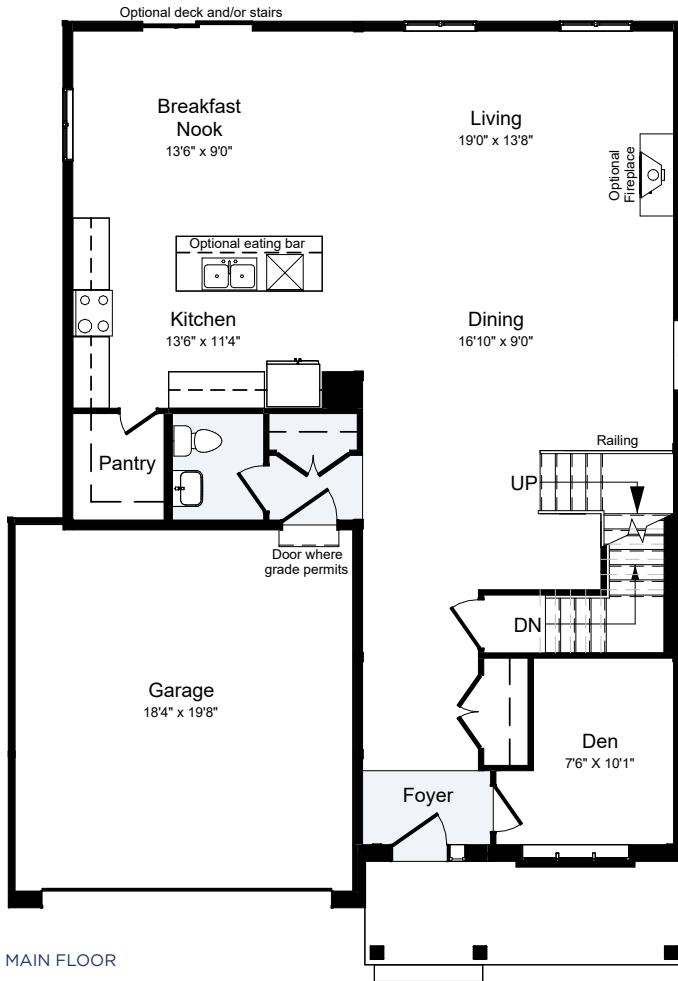


ELEV. A



ELEV. B

COMING SOON



May 13, 2026

Prices, features and specifications are subject to change without notice. Renderings are artist's concept. Actual usable floor space may vary from the stated floor area. E. & O. E.



ALL CARACO HOMES INCLUDE:

- 9' main floor wall height
- Quartz countertops in kitchen and bathrooms (Level 1)
- Stainless undermount kitchen sink
- Extended upper kitchen cabinets
- 7 pot lights (3 in the kitchen and 4 in the living room)
- 2 pendants over the kitchen island
- Basement bathroom rough-in
- Dry walled garage
- Exterior eavestroughs
- Asphalt paved driveway
- Limited lifetime warranty of shingles
- Limited lifetime warranty of foundation waterproofing
- EnergySTAR® windows
- 7 year Tarion Warranty

PRESTIGE SERIES HOMES INCLUDE:

- Ceramic tile (Level 1) in foyer, laundry and bathrooms
- Hardwood flooring (Level 1) in main floor living areas
- 200 amp electrical panel

