

THE CALDWELL

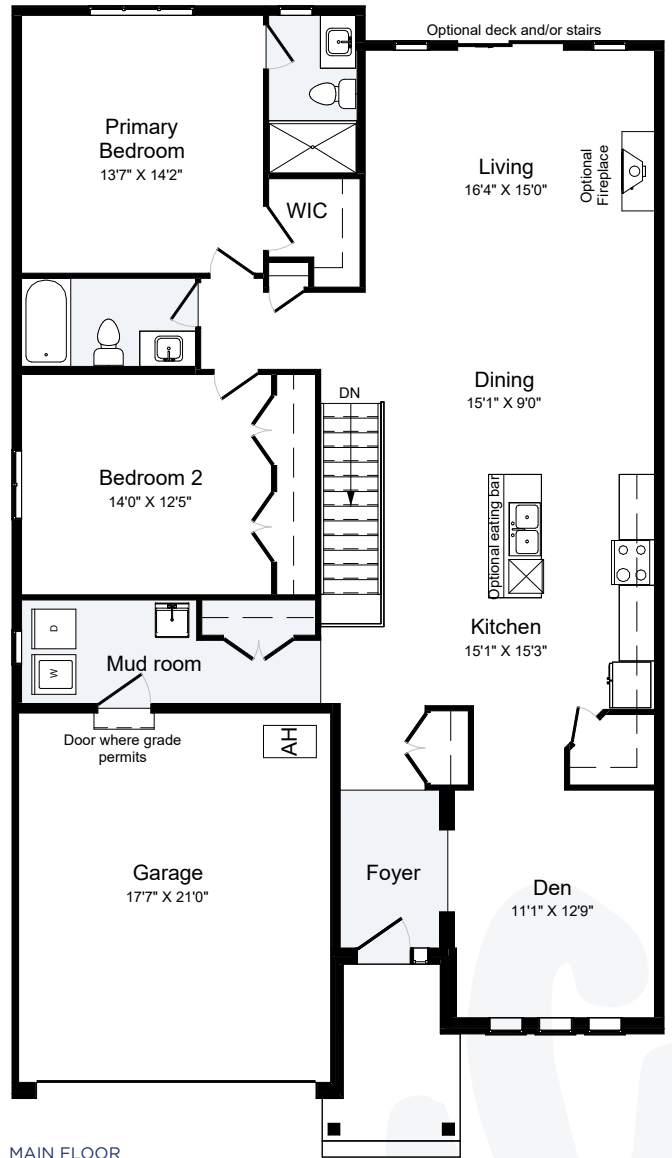
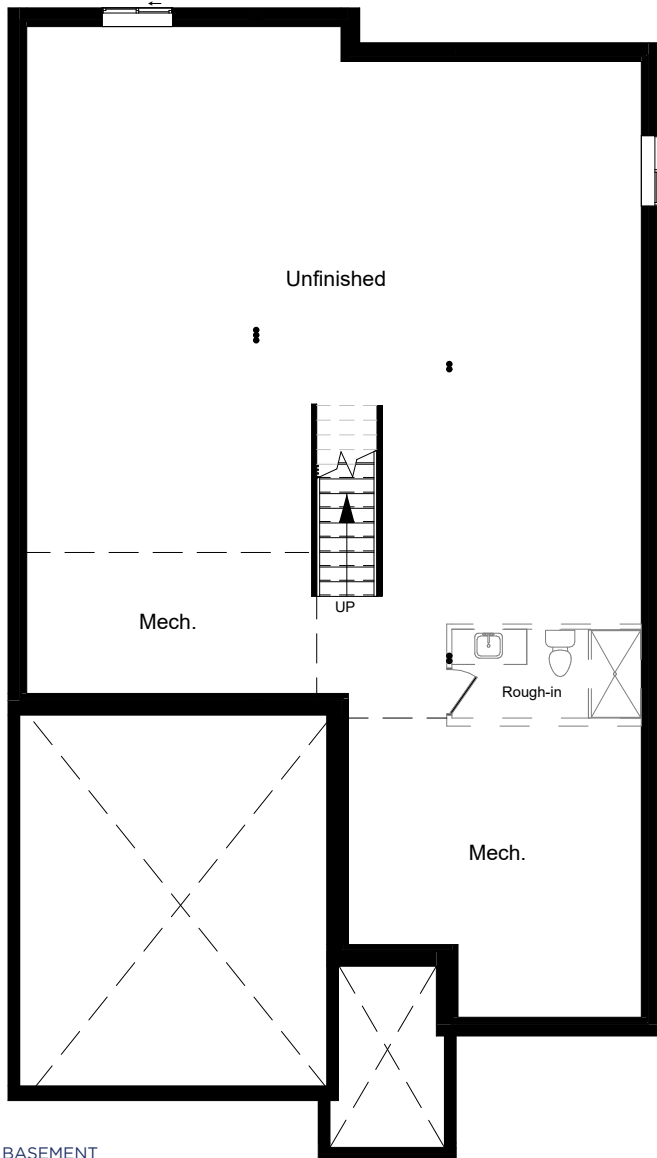
1,785 SQ.FT.

BUNGALOW | PRESTIGE SERIES

2  | 2  | 2 



COMING SOON





ALL CARACO HOMES INCLUDE:

- 9' main floor wall height
- Quartz countertops in kitchen and bathrooms (Level 1)
- Stainless undermount kitchen sink
- Extended upper kitchen cabinets
- 7 pot lights (3 in the kitchen and 4 in the living room)
- 2 pendants over the kitchen island
- Basement bathroom rough-in
- Dry walled garage
- Exterior eavestroughs
- Asphalt paved driveway
- Limited lifetime warranty of shingles
- Limited lifetime warranty of foundation waterproofing
- EnergySTAR® windows
- 7 year Tarion Warranty

PRESTIGE SERIES HOMES INCLUDE:

- Ceramic tile (Level 1) in foyer, laundry and bathrooms
- Hardwood flooring (Level 1) in main floor living areas
- 200 amp electrical panel

